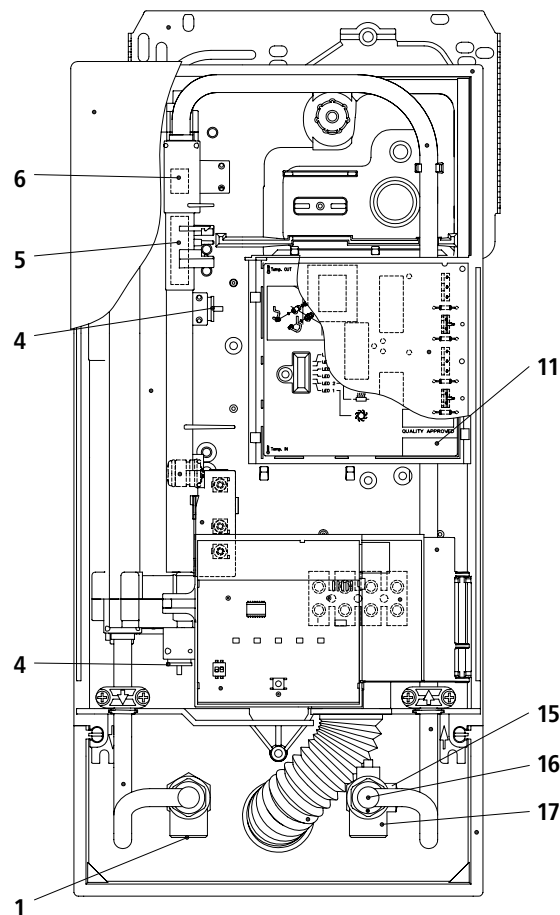


# Electronic instantaneous water heater DCX (before 07/2012)



Pos.	Art.-No.	Description	Euro*	Pos.	Art.-No.	Description	Euro*
1	82085	Hot water connection	25.00	14	82531	Inlet pipe	15.00
2	82529	Outlet pipe	12.00	<b>15</b>	<b>82162</b>	<b>Fine filter</b>	<b>5.00</b>
3	82553	DCX control panel	65.00	<b>16</b>	<b>89110</b>	<b>Flow limiter 8 l/min</b>	<b>3.00</b>
<b>4</b>	<b>82512</b>	<b>DCX thermal sensor set</b>	<b>32.00</b>	17	82074	Cold water connection	25.00
<b>5</b>	<b>82526</b>	<b>Flow sensor</b>	<b>14.00</b>	18	82571	Frame	6.00
<b>6</b>	<b>82246</b>	<b>Non-return valve</b>	<b>6.00</b>	19	82060	Water splash protection sleeve	5.00
7	82508	DCX hood	25.00	20	82180	Grommet	4.00
8	82520	Wall bracket	5.00	21	82110	Screw-in nipples 1/2"	4.00
9	82505	Bottom part	15.00	22	82504	Faceplate	7.00
10	82591	DCX connecting pipe	10.00	Not shown:			
11	82580	PCB cover	5.00	23	82598	Set of small spare parts	10.00
12	82573	Control panel support	5.00	Parts in <b>bold type</b> are key components for servicing purposes.			
13	82572	Connecting terminal	4.00				

When ordering, please always specify the appliance model and serial number from the rating plate. Further spare parts on request.

CLAGE GmbH  
 Pirolweg 1–5, 21337 Lüneburg  
 Fon: +49(0)4131·8901-0  
 Fax: +49(0)4131·83 200  
 E-mail: export@clage.de

Service:  
 Fon: +49(0)4131·8901-40  
 Fax: +49(0)4131·8901-41  
 E-mail: service@clage.de  
 Internet: www.clage.de