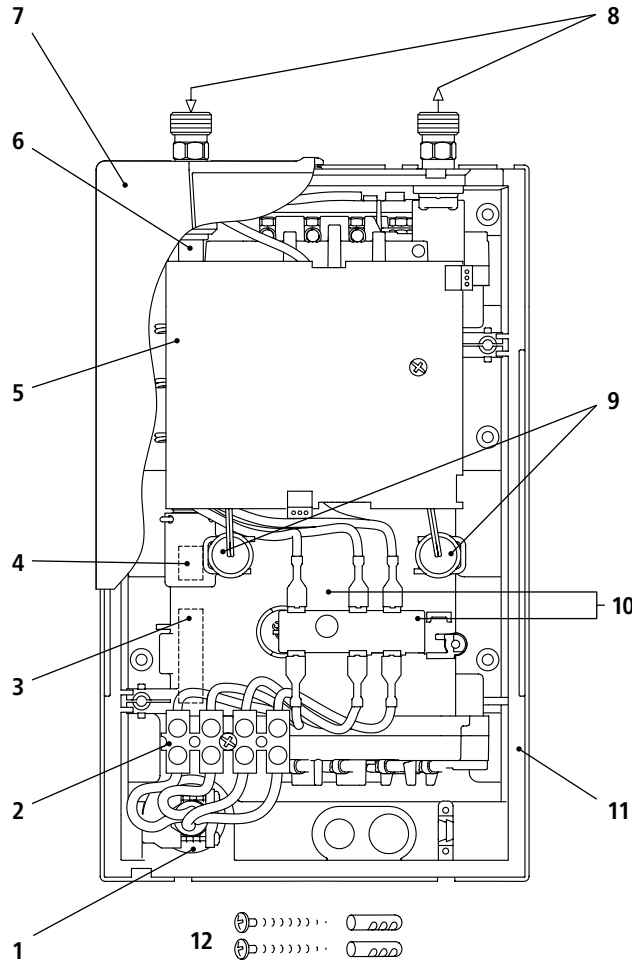


# Instantaneous water heater CDX-U



Pos.	Art.-No.	Description	Euro*	Pos.	Art.-No.	Description	Euro*
1	82806	Grommet	4.00	<b>9</b>	<b>82512</b>	<b>Temperature sensor set before 08/2012</b>	<b>32.00</b>
2	86250	Connection terminal	4.00		<b>82851</b>	<b>Thermal sensor set after 08/2012</b>	<b>25.00</b>
<b>3</b>	<b>82819</b>	<b>Flow sensor</b>	<b>28.00</b>	10	82815	Heating element	105.00
<b>4</b>	<b>82246</b>	<b>Non-return valve</b>	<b>4.00</b>	11	82809	Bottom part	16.00
5	82814	PCB CDX-U	96.00	12	82817	Set of small parts	3.50
6	82802	Inlet pipe	22.00				
7	83000	CDX-U front cover	26.00				
8	82807	Water connections 3/8"	14.00				

Parts in **bold type** are key components for servicing purposes.

When ordering, please always specify the appliance model and serial number from the rating plate. Further spare parts on request.

CLAGE GmbH  
 Pirolweg 1–5, 21337 Lüneburg  
 Fon: +49(0)4131·8901-0  
 Fax: +49(0)4131·83 200  
 E-mail: export@clage.de

Service:  
 Fon: +49(0)4131·8901-40  
 Fax: +49(0)4131·8901-41  
 E-mail: service@clage.de  
 Internet: www.clage.de